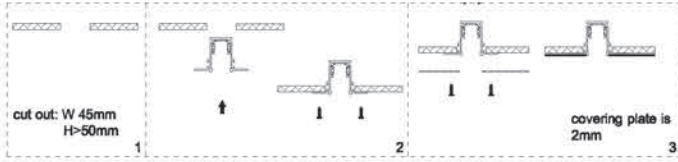




6.Recessed track rail installation instruction

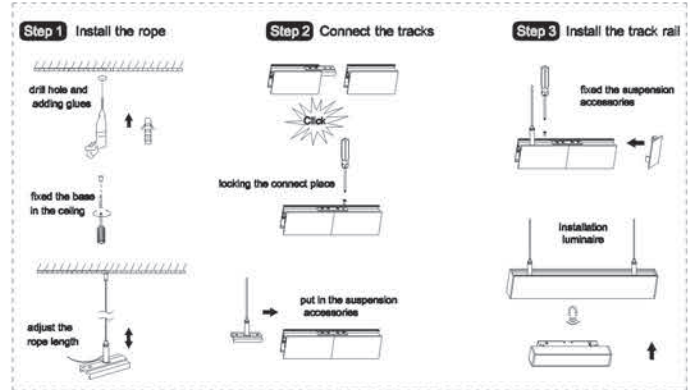
603 track rail installation



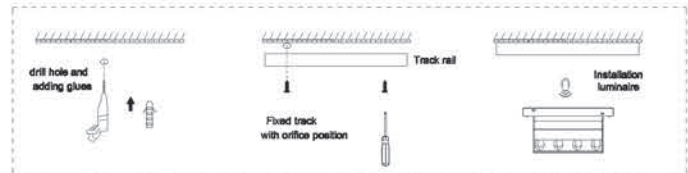
- Step 1** Making a hole on the board according to the size requirement (picture1)
- Step 2** Fixed screws to the board according to the instruction(picture2)
- Step 3** Adding a plasterboard in the underside and fixed it by screws(picture3)
- Step 4** Brushing when add Brushing track cover(picture3)

7.Surface mounted track rail installation

601 suspension track rail installation instruction

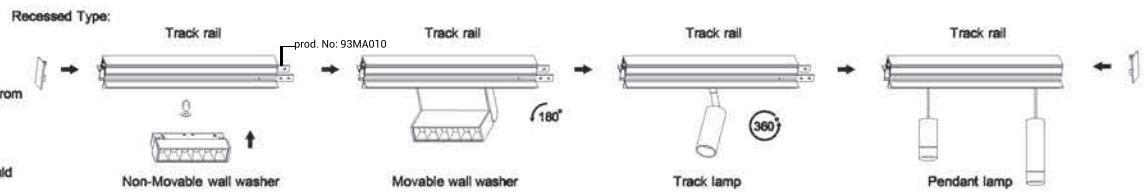


601 surface mounted track rail installation instruction

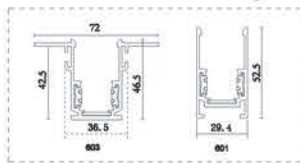


1.Attention:

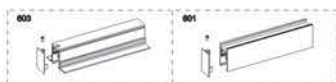
- Let professional technicians to install.
- Disconnect circuit before installation.
- The product should be installed away from high temperature flammable.
- Product wiring neat without crossing, should be ground wired
- When climbing to operate, people should be supervised and anti-slip.



2.Products structure drawing

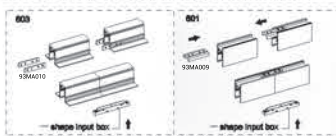


3.End cover installation instruction

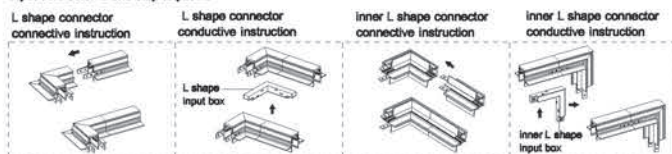


End cover is used to the first and the end track rail, We need fixed it in the track rail and tighten the screws.

4.Track rail connective instruction



Input connector is used to conductive the line at the junction of two tracks, it is proper to all track rail. Input connector is one step to put in.



L shape with inner L shape connector, L shape with inner L shape input box, Their installation methods is proper to all tracks rail installation

5.Track rail power on

